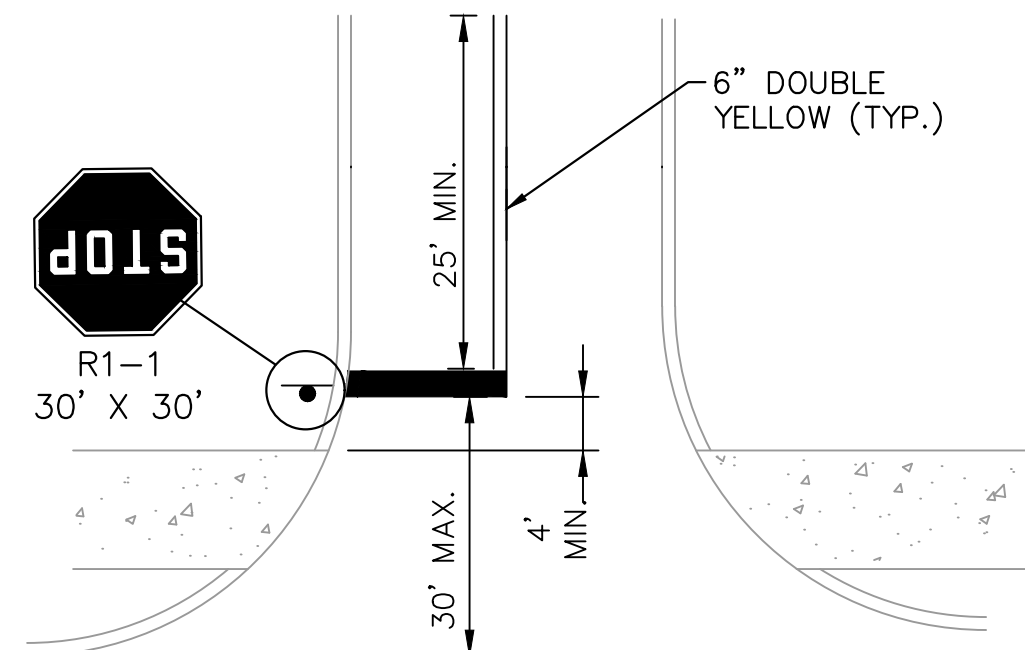
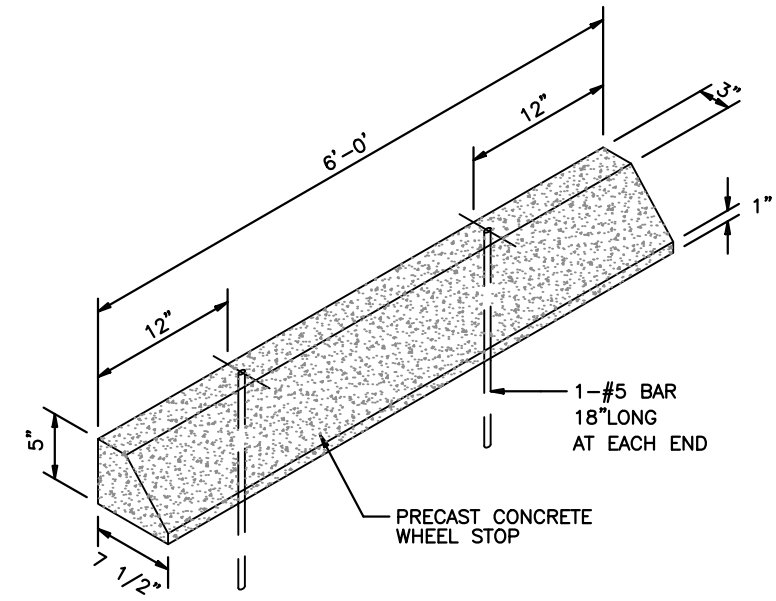


This document, together with the concepts and designs presented herein, as an instrument of service, is intended only for the specific purpose and client for which it was prepared. Reuse of and improper reliance on this document without written authorization and adaptation by Kimley-Horn and Associates, Inc. shall be without liability to Kimley-Horn and Associates, Inc.

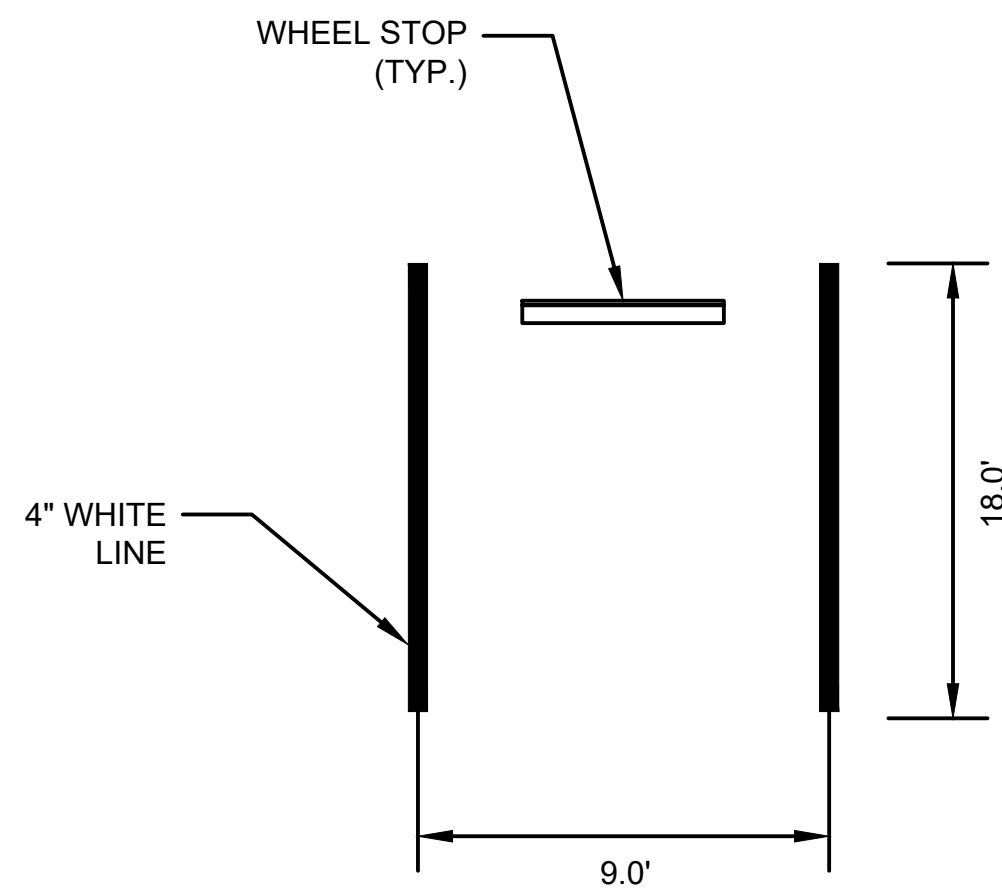


STOP BAR MARKING DETAIL

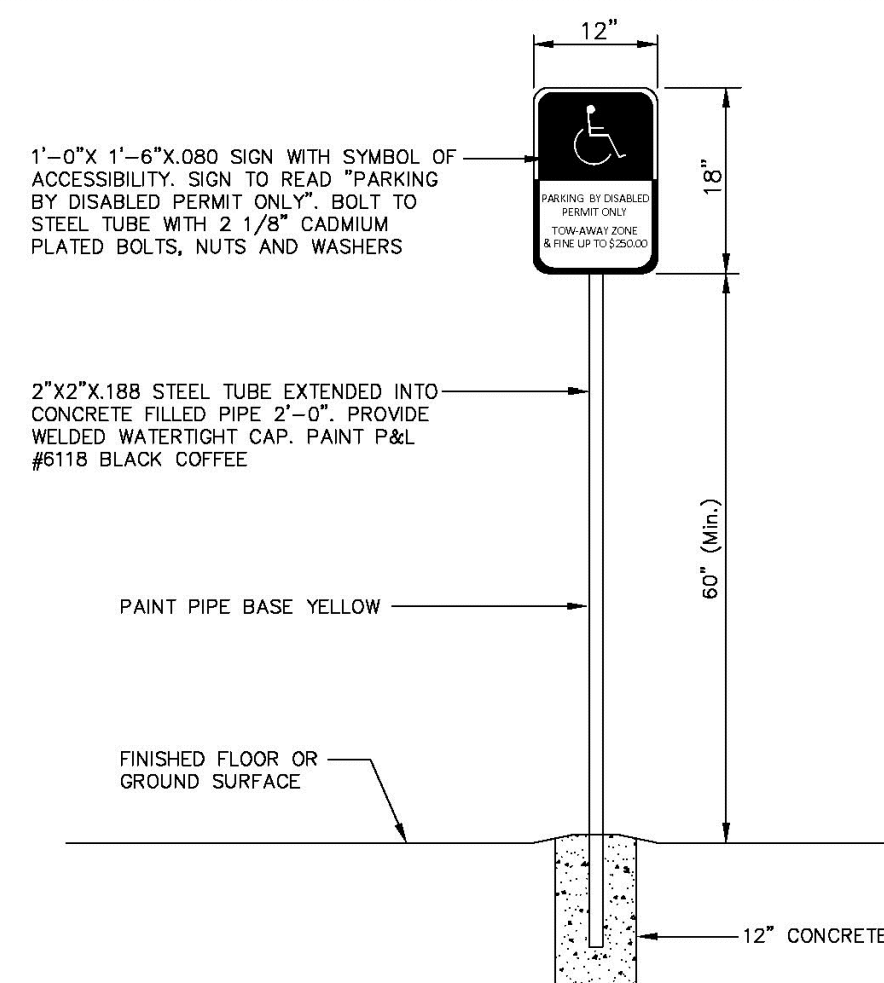


WHEELSTOP DETAIL

SCALE: N.T.S.



PARKING STALL PAINTING DETAIL

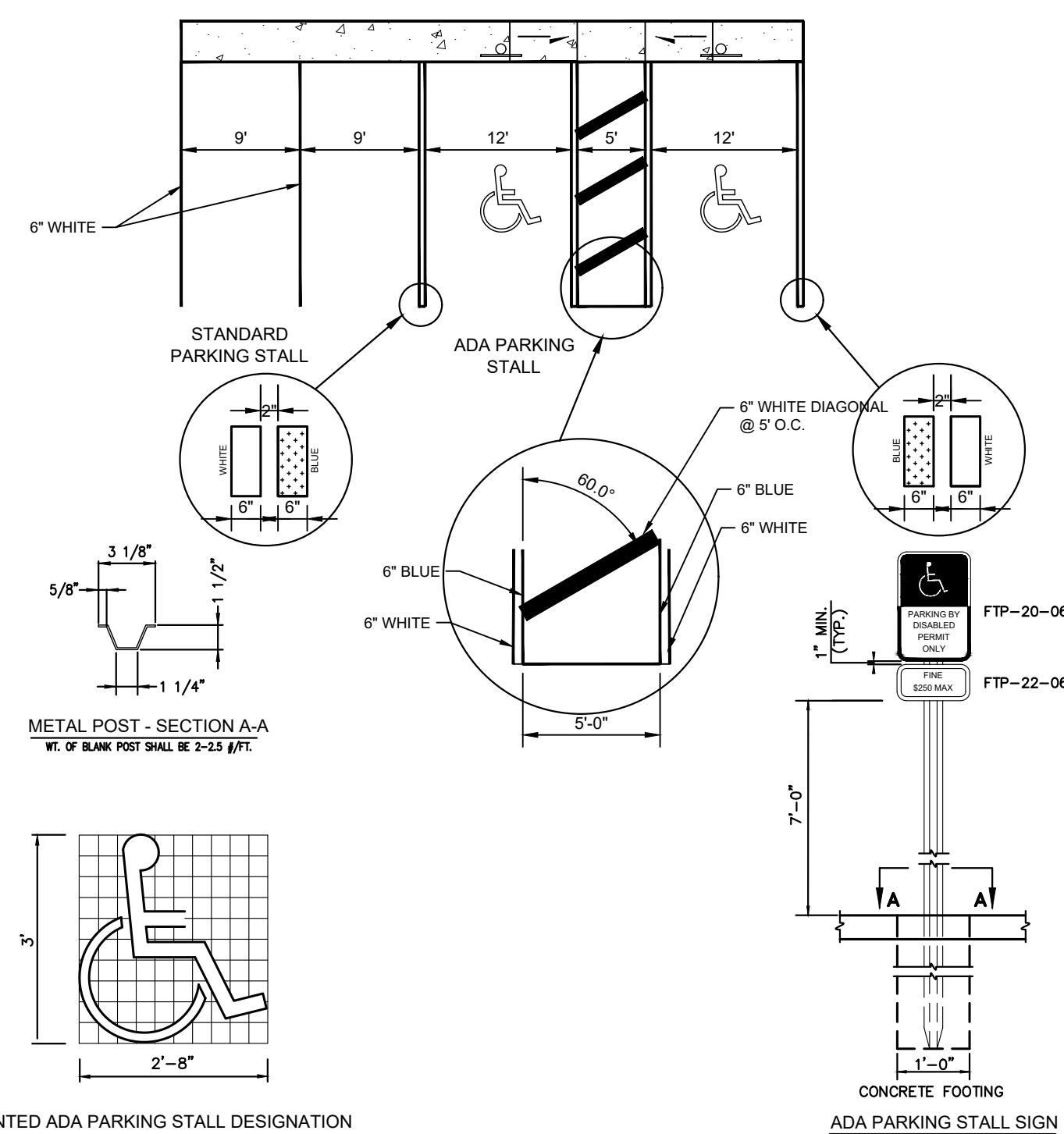


ACCESSIBLE PARKING SPACE SIGN

SIGN NOTE

ACCESSIBLE PARKING SPACES SHALL BE POSTED WITH A FIXED PARKING SIGN NO LESS THAN 60" Min. TO THE BOTTOM OF THE SIGN AND WHICH BEARS THE INTERNATIONAL SYMBOL OF ACCESSIBILITY MEETING THE REQUIREMENTS OF THE STANDARDS AND THE CAPTION "PARKING BY DISABLED PERMIT ONLY." AND MUST INDICATE THE PENALTY FOR ILLEGAL USE OF THE SPACE.

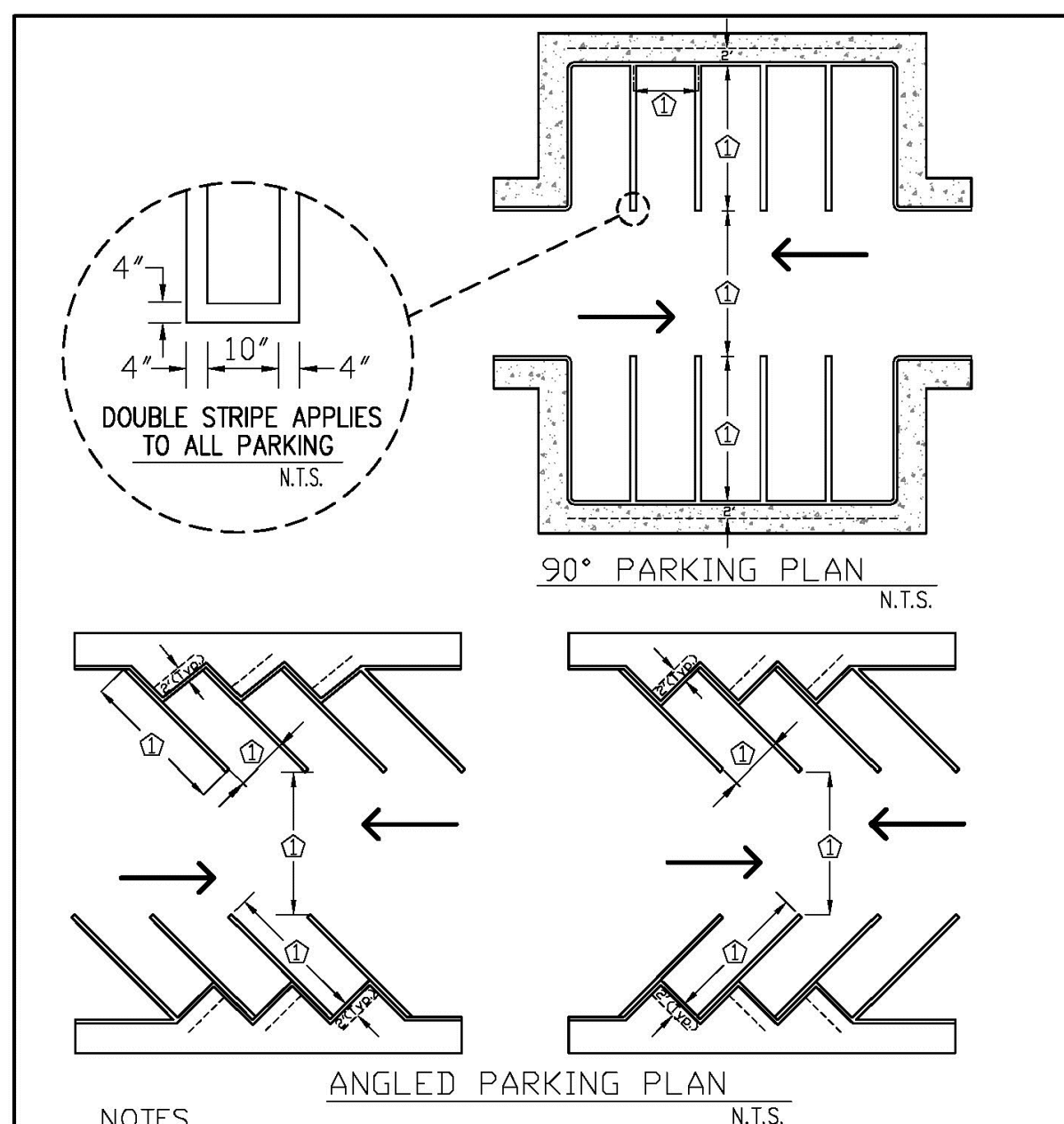
ENGINEERING STANDARDS 2025			
REVISIONS		ENGINEERING DIVISION CITY OF POMPANO BEACH	ACCESSIBLE SPACE SIGN
BY	DATE		
		SCALE: N.T.S.	DATE: MAY 2022 DWG. NO.
			300-5



NOTES:

1. STRIPING IS TO BE PAINT, CONFORMING WITH FDOT STANDARD INDEX 17346.
2. DIMENSIONS SHOWN ARE TO THE CENTERLINE OF THE STRIPE.
3. EACH SPACE SHALL HAVE FTP-20-4 AND FTP-22-4 SIGNS AS SHOWN, FABRICATED WITH REFLECTIVE COATING IN THE SYMBOL, MESSAGE, AND BORDER, APPLIED TO A SHEET ALUMINUM BACKING 0.080 IN THICKNESS. MESSAGE LETTERING SHALL BE PER THE MANUAL ON UNIFORM TRAFFIC CONTROL, DEVICES, LATEST EDITION.
4. CONCRETE FOOTING SHALL BE PORTLAND CEMENT CONCRETE AND HAVE A MINIMUM COMPRESSIVE STRENGTH OF 3,000 PSI AT 28 DAYS.
5. METAL POST SHALL BE GALVANIZED AND ALL BOLTS, NUTS, WASHERS, AND SCREWS SHALL BE RUSTPROOF. POST SHALL BE PLACED AT A MINIMUM OF 2'-6" CLEAR FROM FACE OF CURB OR WHEELSTOP. POST SHALL HAVE 3/8" HOLES DRILLED 1" ON CENTER FULL LENGTH. MOUNT SIGNS WITH 5/16"x1/2-1/4" BOLTS, TOP AND BOTTOM OF SIGNS.

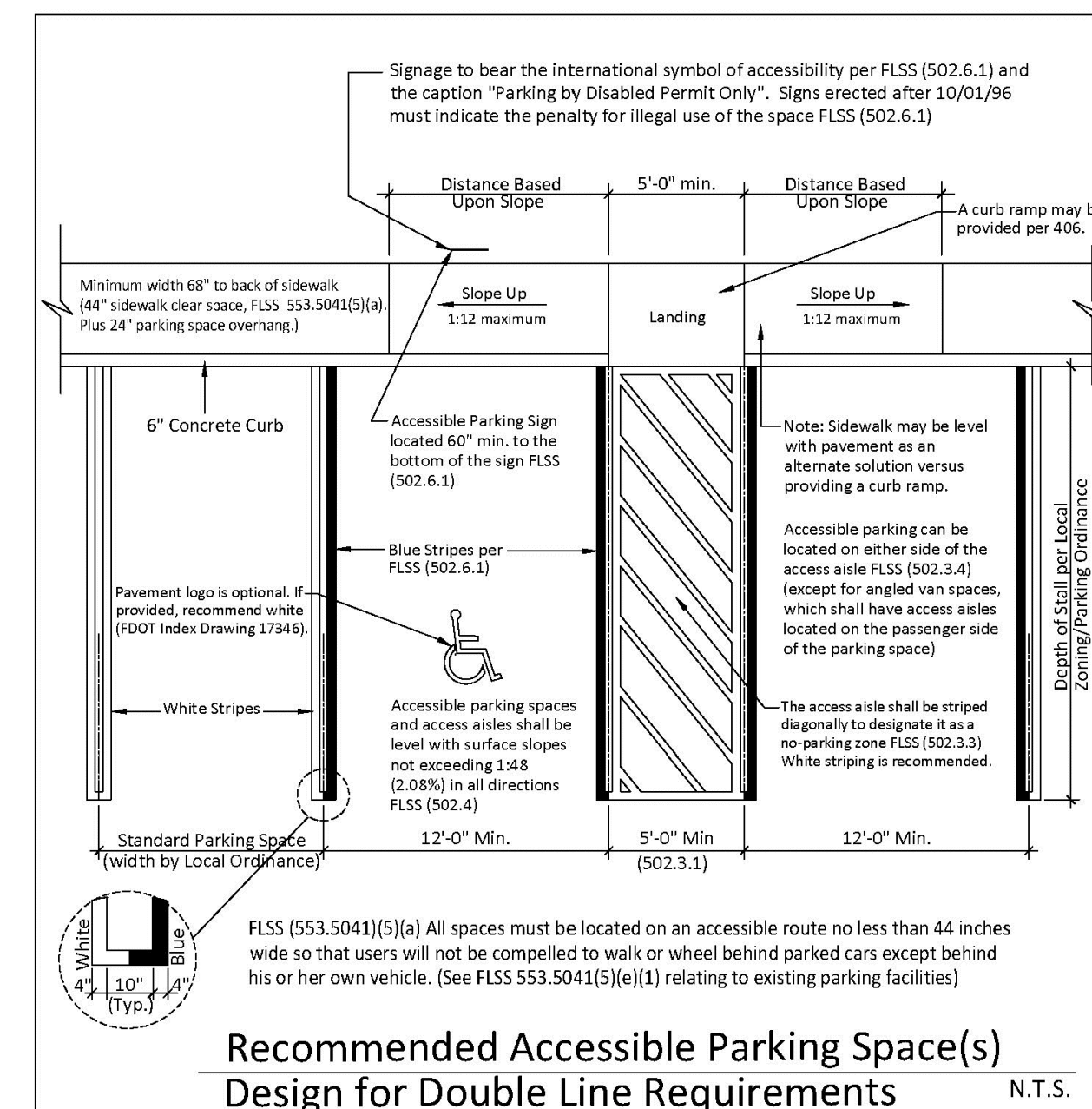
STANDARD PARKING STALL & ADA PARKING STALL
SIGNAGE & MARKING DETAIL
NOT TO SCALE



NOTES

- ① INDICATED DIMENSION BY LOCAL ZONING ORDINANCE.
- 2 CURBING APPLIES TO ALL PARKING.
- 3 EACH SPACE SHALL BE DESIGNATED BY FOUR 4 INCH WIDE VISIBLE STRIPING CONSISTING OF WHITE PAINT OR AS APPROVED BY THE CITY.

ENGINEERING STANDARDS 2025			
REVISIONS		ENGINEERING DIVISION CITY OF POMPANO BEACH	STANDARD PARKING SPACES
BY	DATE		
		SCALE: N.T.S.	DATE: MAY 2022 DWG. NO. 300-3



Recommended Accessible Parking Space(s)	
Design for Double Line Requirements	N.T.S.

THIS TECHNICAL ASSISTANCE DOCUMENT IS INTENDED TO PROVIDE INFORMAL GUIDANCE AND DOES NOT CONSTITUTE A LEGAL INTERPRETATION OF STATUTORY OR REGULATORY CRITERIA.

ENGINEERING STANDARDS 2025			
REVISIONS		ENGINEERING DIVISION CITY OF POMPAÑO BEACH	ACCESSIBLE PARKING SPACES
BY	DATE		
SCALE: N.T.S.			DATE: MAY 2022 DWG. NO.
			300-4

[illegible]

Kimley»»Horn

© 2025 KIMLEY-HORN AND ASSOCIATES, INC.
201 PETERS ROAD, SUITE 2200, PLANTATION, FL 33324
PHONE: 954-535-5100 FAX: 954-739-2247
WWW.KIMLEY-HORN.COM REGISTRY No. 35106

LICENSED PROFESSIONAL

KHA PROJECT	DATE
043175014	9/4/2025
SCALE	AS SHOWN
DESIGNED BY	GVF
DRAWN BY	EA
CHECKED BY	GVF

HORIZONTAL CONTROL, SIGNAGE AND MARKING DETAILS

MODERA POMPANO

BEACH
PREPARED FOR

MCRT IN
POMPAO BEACH

SHEET NUMBER
C-202

DRC

PZ25-12000028

10/15/2025